



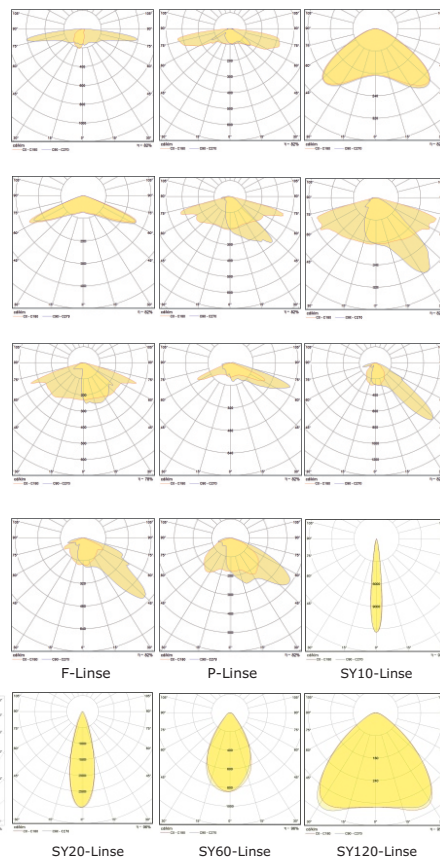
powered by  
**TRIDONIC**

## Cronus Midi - 9162 - Series LED planar floodlight

The Cronus-Midi floodlight series is an innovative solution for efficient illumination of industrial areas with mounting heights of up to 10 metres. Here, innovative LED technology is combined with functional design.

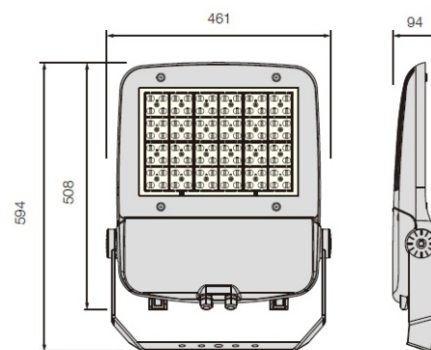
Its field of application is the illumination of areas around industrial halls, storage areas and also car parks. Flexibility and a modular design also allow the Cronus Midi to be used in C-lens S-lens X-lens façade illumination in areas close to buildings. Several optics for wide-angle and narrow-angle asymmetrical illumination round off the flexibility of use. The very high quality PMMA lens technology is executed in multilayer technology and thus guarantees a service life of 100000h L80/B10 for the LED B-lens M-lens E-lens light source. The stable aluminium die-cast luminaire housing in IP66 and IK09 has an adjustable mounting bracket for individual mounting.

The Cronus-Midi floodlight series also has Y-lens T-lens I-lens microprocessor-controlled LED operating electronics that can be adjusted individually and according to requirements. Thus, it always fulfils the required illuminance, so that standard-compliant lighting is always guaranteed.



### Technical data

|                                |   |
|--------------------------------|---|
| System performance             | 100 - 208W                                      |
| Color temperature              | 4.000 K day white                               |
| Lamp typ                       | LED-Multilayer                                  |
| Optics                         | PMMA Lenses in multilayer technology            |
| Light distribution             | Y/S/X/C/B/M/E/T/I/F/P/SY10/SY20/SY60/SY120/1550 |
| Case color                     | RAL9022, more on request                        |
| System Luminous flux           | 15151 - 27855lm                                 |
| Operating unit                 | Internal electronic                             |
| Input voltage                  | 220-240 V, 0/50/60 Hz                           |
| Protection clas                | IP66, IK09, protection class I                  |
| Total weight                   | 12,9 kg   |
| Power reduction                | DALI, switching phase, ChronoStep               |
| Electric Strenght              | up to 10kV (between L/N - PE)                   |
| Operation range t <sub>a</sub> | -40° bis +50° C                                 |
| Fastening                      | Infinitely adjustable mounting bracket          |
| Inclination angle              | adjustable from -90° bis +90°                   |



H=94 | W=461 | D=508 (mm)

| Collection number | Description       | Type  |
|-------------------|-------------------|---|
| 798000            | 9162***00**ME-*AY | cronus-9162,**100/122/152 Watt, HP LED 15121 - 20641lm, **27/30/40/50, *Y/S/X/C/B/M/E/T/I/F/P/SY10/SY20/SY60/SY120/1550 |
| 798013            | 9162***00**ME-*AY | cronus-9162,**175/208 Watt, HP LED 26346 - 27855lm, **27/30/40/50, *Y/S/X/C/B/M/E/T/I/F/P/SY10/SY20/SY60/SY120/1550     |

Sales partner in the Netherlands: